

FS Vis à plâtre - métal

Vis avec filetage fin pour la fixation des cloisons sèches



Agréments

PN-EN 14566 + A1: 2012

DoP-EN14566

Réaction au feu: A1

Résistance à la flexion: répond

CE
10

Informations sur le produit

Caractéristiques et avantages

- Géométrie optimisée de la pointe de la vis - excellente capacité de forage
- En acier galvanisé phosphaté à faible teneur en carbone
- La construction de la tête avec l'entraînement PH2 permet un revêtement parfait de la vis dans la plaque G-K
- Aucun pré-perçage requis

Applications

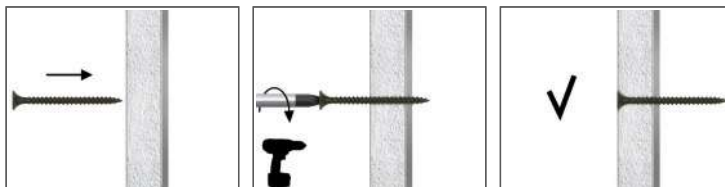
- Montage des plaques de plâtre pour constructions métalliques

Matériau de support

Certifié pour:

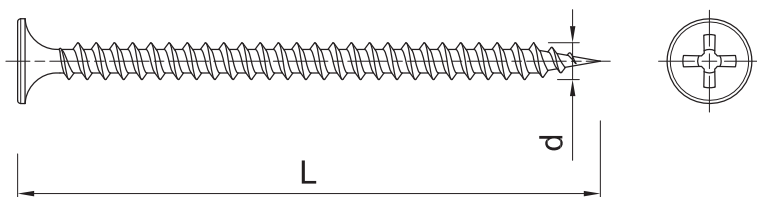
- Profil en acier

Instruction de montage



1. Serrez la vis perpendiculairement au sol jusqu'à ce que la surface de la tête rencontre le sol
2. Les vis à tête fraisée peuvent affleurer le sol

Informations sur le produit



| Dimen sions | Produit | Cheville | | Element fixe |
|----------------|----------|-----------|-----------|--------------------------|
| | | Diamètre | Longueur | Epaisseur max |
| | | d [mm] | L [mm] | t _{fix} [mm] |
| Ø03.5 | FS-3525 | 3.5 | 25 | 14 |
| | FS-3535 | 3.5 | 35 | 24 |
| | FS-3545 | 3.5 | 45 | 34 |
| | FS-3555 | 3.5 | 55 | 44 |
| Ø04.2 | FS-4270 | 4.2 | 70 | 57 |
| Ø04.8 | FS-4890 | 4.8 | 90 | 76 |
| | FS-48100 | 4.8 | 100 | 86 |
| | FS-48110 | 4.8 | 110 | 96 |
| | FS-48120 | 4.8 | 120 | 106 |

Recommandations d'assemblage

| Taille | | | Ø3.5 | Ø4.2 | Ø4.8 |
|---|------------------|------|-------|-------|-------|
| Base | | | Acier | Acier | Acier |
| Profondeur totale de fixation du connecteur | h _{nom} | [mm] | - | - | - |
| Épaisseur minimale du support | h _{min} | [mm] | 0.5 | 0.5 | 0.5 |
| Espacement min. | s _{min} | [mm] | 30 | 30 | 30 |
| Distance min. du bord | c _{min} | [mm] | 30 | 30 | 30 |

Données simplifiées pour un seul ancrage

Données pour un montage unique sans influence des bords et des connecteurs adjacents

| Taille | | Ø3.5 | Ø4.2 | Ø4.8 |
|--|------|-------|-------|------|
| Base | | Acier | Acier | Stal |
| Épaisseur du support h _{min} | [mm] | 0.5 | 0.5 | 0.5 |
| CHARGE CARACTÉRISTIQUE_{rk} | | | | |
| FS F _{rk} | [kN] | 0.57 | 0.57 | 0.57 |
| VALEUR DE CALCUL_{rd} | | | | |
| FS F _{rd} | [kN] | 0.29 | 0.29 | 0.29 |
| CHARGE RECOMMANDÉE_{rec} | | | | |
| FS F _{rec} | [kN] | 0.21 | 0.21 | 0.21 |

Données logistiques

| Dimen sions | Produit | Chevilles | | Nombre [pcs] | | | Poids [kg] | | | Code ean |
|----------------|----------|---------------|---------------|-------------------|---------------------|---------|-------------------|---------------------|---------|---------------|
| | | Diamètre [mm] | Longueur [mm] | Unité d'emballage | Emballage collectif | Palette | Unité d'emballage | Emballage collectif | Palette | |
| Ø03.5 | FS-3525 | 3.5 | 25 | 1000 | 16000 | 384000 | 1.31 | 21.0 | 534.7 | 5906675305127 |
| | FS-3535 | 3.5 | 35 | 1000 | 12000 | 288000 | 1.72 | 20.6 | 524.6 | 5906675305226 |
| | FS-3545 | 3.5 | 45 | 500 | 6000 | 144000 | 1.14 | 13.7 | 359.1 | 5906675305325 |
| | FS-3555 | 3.5 | 55 | 500 | 6000 | 144000 | 1.32 | 15.8 | 409.9 | 5906675305424 |
| Ø04.2 | FS-4270 | 4.2 | 70 | 250 | 3000 | 72000 | 1.09 | 13.1 | 343.2 | 5906675307022 |
| Ø04.8 | FS-4890 | 4.8 | 90 | 250 | 3000 | 72000 | 2.0 | 24.3 | 613.3 | 5906675307121 |
| | FS-48100 | 4.8 | 100 | 200 | 2400 | 57600 | 1.93 | 23.1 | 585.2 | 5906675307220 |
| | FS-48110 | 4.8 | 110 | 200 | 2400 | 57600 | 2.0 | 24.0 | 606.0 | 5906675307329 |
| | FS-48120 | 4.8 | 120 | 200 | 2400 | 57600 | 2.2 | 26.0 | 654.7 | 5906675307428 |

TRADUCTION FRANCAISE LIBRE
ADAM MATERIAUX

FS Gipsschroef - metalen schroef

Schroef met fijne draad voor bevestiging van gipsplaat



Goedkeuringen

PN-EN 14566 + A1: 2012

DoP-EN14566

Brandreactie: A1

Buigsterkte: reageert

CE
10

Productinformatie

Kenmerken en voordelen

- Geoptimaliseerde geometrie van de schroefpunt - uitstekende boorcapaciteit
- Gemaakt van koolstofarm gegalvaniseerd staal
- De constructie van de kop met de PH2-aandrijving maakt een perfecte coating van de schroef in de G-K-plaat mogelijk
- Geen voorboren vereist

Toepassingen

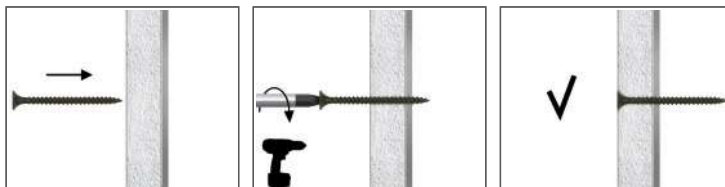
- Installatie van gipsplaat voor metalen constructies

Ondersteunend materiaal

Gecertificeerd voor:

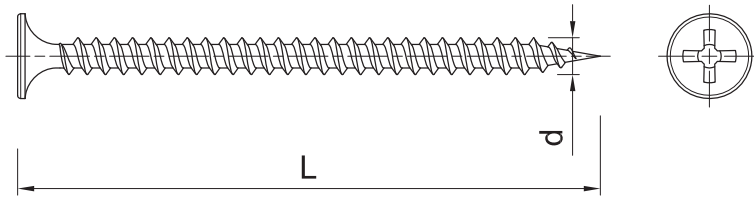
- Stalen profiel

Installatie instructies



1. Draai de schroef loodrecht op de steun vast totdat het kopoppervlak de steun raakt
2. Verzonken schroeven kunnen gelijk liggen met de steun

Productinformatie



| Afmetingen | Product | Enkel | | Vast element |
|------------|----------|----------|--------|------------------|
| | | Diameter | Lengte | Maximale dikte |
| | | d | L | t _{fix} |
| | | [mm] | [mm] | [mm] |
| Ø03.5 | FS-3525 | 3.5 | 25 | 14 |
| | FS-3535 | 3.5 | 35 | 24 |
| | FS-3545 | 3.5 | 45 | 34 |
| | FS-3555 | 3.5 | 55 | 44 |
| Ø04.2 | FS-4270 | 4.2 | 70 | 57 |
| Ø04.8 | FS-4890 | 4.8 | 90 | 76 |
| | FS-48100 | 4.8 | 100 | 86 |
| | FS-48110 | 4.8 | 110 | 96 |
| | FS-48120 | 4.8 | 120 | 106 |

Montage aanbevelingen

| Afmetingen | | | Ø3.5 | Ø4.2 | Ø4.8 |
|-------------------------------------|------------------|------|-------|-------|-------|
| Basis | | | Staal | Staal | Staal |
| Totale bevestigingsdiepte connector | h _{nom} | [mm] | - | - | - |
| Minimale steundikte | h _{min} | [mm] | 0.5 | 0.5 | 0.5 |
| Minimale afstand | s _{min} | [mm] | 30 | 30 | 30 |
| Minimale randafstand | c _{min} | [mm] | 30 | 30 | 30 |

Vereenvoudigde gegevens voor één anker

Gegevens voor enkele montage zonder invloed van aangrenzende randen en connectoren

| Afmetingen | | Ø3.5 | Ø4.2 | Ø4.8 | |
|--|------------------|-------|-------|-------|-----|
| Basis | | Staal | Staal | Staal | |
| Dikte steun | h _{min} | [mm] | 0.5 | 0.5 | 0.5 |
| KENMERKENDE BELASTING _{rk} | | | | | |
| FS F _{rk} | [kN] | 0.57 | 0.57 | 0.57 | |
| BEREKENINGSWAARDE _{rd} | | | | | |
| FS F _{rd} | [kN] | 0.29 | 0.29 | 0.29 | |
| AANBEVOLEN BELASTING _{rec} | | | | | |
| FS F _{rec} | [kN] | 0.21 | 0.21 | 0.21 | |

Logistieke gegevens

| Afmetingen | Product | Enkel | | Aantal [stuks] | | | Gewicht [kg] | | | Barcode |
|------------|----------|---------------|-------------|--------------------|------------------------|--------|--------------------|------------------------|-------|---------------|
| | | Diameter [mm] | Lengte [mm] | Verpakking eenheid | Collectieve verpakking | Palet | Verpakking eenheid | Collectieve verpakking | Palet | |
| Ø03.5 | FS-3525 | 3.5 | 25 | 1000 | 16000 | 384000 | 1.31 | 21.0 | 534.7 | 5906675305127 |
| | FS-3535 | 3.5 | 35 | 1000 | 12000 | 288000 | 1.72 | 20.6 | 524.6 | 5906675305226 |
| | FS-3545 | 3.5 | 45 | 500 | 6000 | 144000 | 1.14 | 13.7 | 359.1 | 5906675305325 |
| | FS-3555 | 3.5 | 55 | 500 | 6000 | 144000 | 1.32 | 15.8 | 409.9 | 5906675305424 |
| Ø04.2 | FS-4270 | 4.2 | 70 | 250 | 3000 | 72000 | 1.09 | 13.1 | 343.2 | 5906675307022 |
| Ø04.8 | FS-4890 | 4.8 | 90 | 250 | 3000 | 72000 | 2.0 | 24.3 | 613.3 | 5906675307121 |
| | FS-48100 | 4.8 | 100 | 200 | 2400 | 57600 | 1.93 | 23.1 | 585.2 | 5906675307220 |
| | FS-48110 | 4.8 | 110 | 200 | 2400 | 57600 | 2.0 | 24.0 | 606.0 | 5906675307329 |
| | FS-48120 | 4.8 | 120 | 200 | 2400 | 57600 | 2.2 | 26.0 | 654.7 | 5906675307428 |

VRIJ NEDERLANDSE VERTALING
ADAM MATERIAUX

FS Gipsschrauben - Metall

Schraube mit Feingewinde zur Befestigung von Trockenbauwänden



Zulassungen

PN-IN 14566 + A1: 2012
DoP-EN14566
Reaktion auf Feuer: A1
Biegefestigkeit: antwortet

CE
10

Informationen zum Produkt

Merkmale und Vorteile

- Optimierte Schraubenspitzengeometrie - ausgezeichnete Bohrleistung
- Hergestellt aus phosphatiertem, verzinktem Stahl mit niedrigem Kohlenstoffgehalt
- Die Konstruktion des Kopfes mit PH2-Antrieb ermöglicht eine perfekte Beschichtung der Schraube in der G-K-Platte.
- Kein Vorbohren erforderlich

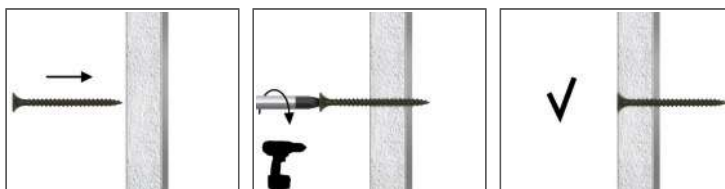
Bewerbungen

- Montage der Platten Gipskartonplatte für Metallkonstruktionen

Trägermaterial

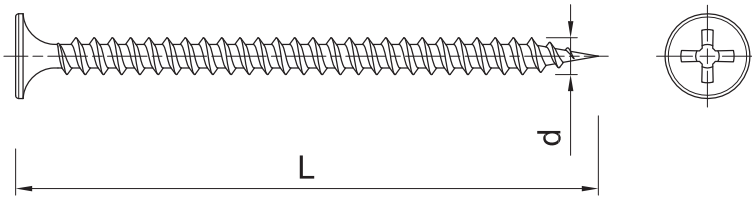
- Zertifiziert für:
- Stahlprofil

Montageanleitung



1. Ziehen Sie die Schraube senkrecht zum Boden an, bis die Oberfläche des Kopfes auf den Boden trifft.
2. Senkkopfschrauben können bündig mit dem Boden abschließen.

Informationen zum Produkt



| Abmessungen | Produkt | Knöchel | | Festes Element |
|-------------|----------|-------------|-------|------------------|
| | | Durchmesser | Länge | Max. Dicke |
| | | d | L | t _{fix} |
| | | [mm] | [mm] | [mm] |
| Ø03.5 | FS-3525 | 3.5 | 25 | 14 |
| | FS-3535 | 3.5 | 35 | 24 |
| | FS-3545 | 3.5 | 45 | 34 |
| | FS-3555 | 3.5 | 55 | 44 |
| Ø04.2 | FS-4270 | 4.2 | 70 | 57 |
| Ø04.8 | FS-4890 | 4.8 | 90 | 76 |
| | FS-48100 | 4.8 | 100 | 86 |
| | FS-48110 | 4.8 | 110 | 96 |
| | FS-48120 | 4.8 | 120 | 106 |

Empfehlungen der Versammlung

| Größe | | | Ø3.5 | Ø4.2 | Ø4.8 |
|--------------------------------------|------------------|------|-------|-------|-------|
| Basis | | | Stahl | Stahl | Stahl |
| Gesamttiefe der Verbinderbefestigung | h _{nom} | [mm] | - | - | - |
| Minimale Substratdicke | h _{min} | [mm] | 0.5 | 0.5 | 0.5 |
| Min. Abstand | s _{min} | [mm] | 30 | 30 | 30 |
| Min. Abstand vom Rand | c _{min} | [mm] | 30 | 30 | 30 |

Vereinfachte Daten für eine einzige Verankerung

Daten für Einzelmontage ohne Einfluss benachbarter Kanten und Anschlüsse

| Größe | | Ø3.5 | Ø4.2 | Ø4.8 |
|---|------|-------|-------|-------|
| Basis | | Stahl | Stahl | Stahl |
| Dicke des Untergrunds h _{min} | [mm] | 0.5 | 0.5 | 0.5 |
| CHARAKTERISTISCHE BELASTUNG_{rk} | | | | |
| FS F _{rk} | [kN] | 0.57 | 0.57 | 0.57 |
| BERECHNUNGSWERT_{rd} | | | | |
| FS F _{rd} | [kN] | 0.29 | 0.29 | 0.29 |
| EMPFOHLENE LAST_{rec} | | | | |
| FS F _{rec} | [kN] | 0.21 | 0.21 | 0.21 |

Logistische Daten

| Abmessungen | Produkt | Knöchel | | Anzahl [Stück] | | | Gewicht [kg] | | | Code EAN |
|-------------|----------|------------------|------------|--------------------|------------------|---------|--------------------|------------------|---------|---------------|
| | | Durchmesser [mm] | Länge [mm] | Verpackungseinheit | Sammelverpackung | Palette | Verpackungseinheit | Sammelverpackung | Palette | |
| Ø03.5 | FS-3525 | 3.5 | 25 | 1000 | 16000 | 384000 | 1.31 | 21.0 | 534.7 | 5906675305127 |
| | FS-3535 | 3.5 | 35 | 1000 | 12000 | 288000 | 1.72 | 20.6 | 524.6 | 5906675305226 |
| | FS-3545 | 3.5 | 45 | 500 | 6000 | 144000 | 1.14 | 13.7 | 359.1 | 5906675305325 |
| | FS-3555 | 3.5 | 55 | 500 | 6000 | 144000 | 1.32 | 15.8 | 409.9 | 5906675305424 |
| Ø04.2 | FS-4270 | 4.2 | 70 | 250 | 3000 | 72000 | 1.09 | 13.1 | 343.2 | 5906675307022 |
| Ø04.8 | FS-4890 | 4.8 | 90 | 250 | 3000 | 72000 | 2.0 | 24.3 | 613.3 | 5906675307121 |
| | FS-48100 | 4.8 | 100 | 200 | 2400 | 57600 | 1.93 | 23.1 | 585.2 | 5906675307220 |
| | FS-48110 | 4.8 | 110 | 200 | 2400 | 57600 | 2.0 | 24.0 | 606.0 | 5906675307329 |
| | FS-48120 | 4.8 | 120 | 200 | 2400 | 57600 | 2.2 | 26.0 | 654.7 | 5906675307428 |

FREIE DEUTSCHE ÜBERSETZUNG
ADAM MATERIAUX

FS for sheet metal

Drywall screw with fine thread for plasterboard fixing.



Approvals and Reports

PN-EN 14566 + A1: 2012

DoP-EN14566

Reaction to fire: A1

Flexural strength: pass

CE
10

Product information

Features and benefits

- Optimised screw tip geometry - excellent drilling capability
- Low-carbon steel with black phosphate finish for increased durability
- Bugle head with PH2 drive designed to finish flush with plasterboard
- No pre-drilling required

Applications

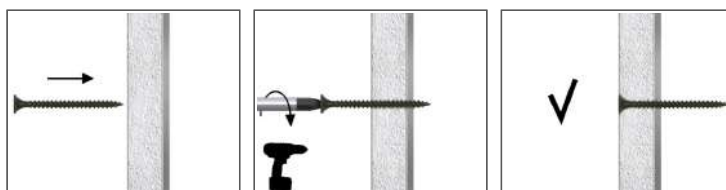
- Fastening plasterboard to metal framework

Base materials

Approved for use in:

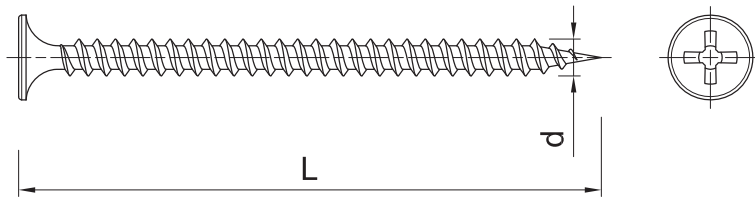
- Structural Steel

Installation guide



1. Drive the screw straight until the head is flush
2. Screws with countersunk head allow flush connection

Product information



| Size | Product Code | Fixing | | Fixture |
|-------|--------------|-----------|-----------|--------------------------|
| | | Diameter | Length | Max. thickness |
| | | d [mm] | L [mm] | t _{fix} [mm] |
| Ø03.5 | FS-3525 | 3.5 | 25 | 14 |
| | FS-3535 | 3.5 | 35 | 24 |
| | FS-3545 | 3.5 | 45 | 34 |
| | FS-3555 | 3.5 | 55 | 44 |
| Ø04.2 | FS-4270 | 4.2 | 70 | 57 |
| Ø04.8 | FS-4890 | 4.8 | 90 | 76 |
| | FS-48100 | 4.8 | 100 | 86 |
| | FS-48110 | 4.8 | 110 | 96 |
| | FS-48120 | 4.8 | 120 | 106 |
| Ø03.5 | FSK-3525 | 3.5 | 25 | 14 |
| | FSK-3535 | 3.5 | 35 | 14 |
| | FSK-3545 | 3.5 | 45 | 14 |
| | FSK-3555 | 3.5 | 55 | 14 |
| | FSK-4890 | 4.8 | 90 | 14 |

Installation data

| Size | | | Ø3.5 | Ø4.2 | Ø4.8 |
|--------------------------|------------------|------|-------|-------|-------|
| Substrate | | | Steel | Steel | Steel |
| Min. installation depth | h _{nom} | [mm] | - | - | - |
| Min. substrate thickness | h _{min} | [mm] | 0.5 | 0.5 | 0.5 |
| Min. spacing | s _{min} | [mm] | 30 | 30 | 30 |
| Min. edge distance | c _{min} | [mm] | 30 | 30 | 30 |

Basic performance data

Performance data for single screw without influence of edge distance and spacing

| Size | | Ø3.5 | Ø4.2 | Ø4.8 |
|---|------|-------|-------|-------|
| Substrate | | Steel | Steel | Steel |
| Substrate thickness h _{min} | [mm] | 0.5 | 0.5 | 0.5 |
| CHARACTERISTIC LOAD F_{Rk} | | | | |
| FS F _{Rk} | [kN] | 0.57 | 0.57 | 0.57 |
| DESIGN LOAD F_{Rd} | | | | |
| FS F _{Rd} | [kN] | 0.29 | 0.29 | 0.29 |
| RECOMMENDED LOAD F_{Rec} | | | | |
| FS F _{rec} | [kN] | 0.21 | 0.21 | 0.21 |

Product commercial data

| Product Code | Fixing | | Quantity [pcs] | | | Weight [kg] | | | Bar Codes |
|--------------|---------------|-------------|----------------|---------|----------|-------------|-------|--------|---------------|
| | Diameter [mm] | Length [mm] | Box | Outer | Pallet | Box | Outer | Pallet | |
| FS-3525 | 3.5 | 25 | 1000.0 | 16000.0 | 384000.0 | 1.39 | 22.3 | 564.5 | 5906675305127 |
| FS-3535 | 3.5 | 35 | 1000.0 | 12000.0 | 288000.0 | 1.69 | 20.3 | 516.1 | 5906675305226 |
| FS-3545 | 3.5 | 45 | 500.0 | 6000.0 | 144000.0 | 1.12 | 13.4 | 352.0 | 5906675305325 |
| FS-3555 | 3.5 | 55 | 500.0 | 6000.0 | 144000.0 | 1.29 | 15.5 | 401.5 | 5906675305424 |
| FS-4270 | 4.2 | 70 | 250.0 | 3000.0 | 72000.0 | 1.06 | 12.8 | 336.1 | 5906675307022 |
| FS-4890 | 4.8 | 90 | 250.0 | 3000.0 | 72000.0 | 2.0 | 23.9 | 602.8 | 5906675307121 |
| FS-48100 | 4.8 | 100 | 200.0 | 2400.0 | 57600.0 | 1.92 | 23.0 | 583.0 | 5906675307220 |
| FS-48110 | 4.8 | 110 | 200.0 | 2400.0 | 57600.0 | 2.0 | 24.0 | 606.0 | 5906675307329 |
| FS-48120 | 4.8 | 120 | 200.0 | 2400.0 | 57600.0 | 2.2 | 26.0 | 654.7 | 5906675307428 |
| FSK-3525 | 3.5 | 25 | 10.0 | 10.0 | - | 10.5 | 10.5 | 406.3 | 5906675193014 |
| FSK-3535 | 3.5 | 35 | 10.0 | 10.0 | - | 10.5 | 10.5 | 406.5 | 5906675193038 |
| FSK-3545 | 3.5 | 45 | 10.0 | 10.0 | - | 10.4 | 10.4 | 404.5 | 5906675193045 |
| FSK-3555 | 3.5 | 55 | 10.0 | 10.0 | - | 10.4 | 10.4 | 403.0 | 5906675193052 |
| FSK-4890 | 4.8 | 90 | - | - | - | 10.0 | 10.0 | 750.0 | 5906675193076 |